

CAT6 24 PORT (SHIELDED) PATCH PANEL (19" RACKMOUNT)

Jack2Rack

DESCRIPTION

CAT6 Shielded 24 Port 110-IDC Patch Panel.

FEATURES

- Shielded to protect against EMI, RFI
- High Impact Patch Panel
- Tough Black Painted Finish
- Number Labeled for Easy Identification
- 568A & 568B Wiring Color Codes
- 110 IDC Terminals (22-26AWG)
- ETL Verified to ANSI/TIA/EIA 568-B.2

SKU: 042-377/S/24

Panel

Material	SECC
Thickness	1.6mm
Plated	Black
Dimension	EIA-310D (1U)

Rear Cover

Material	SECC
Thickness	1.0mm

IDC Connector

Operating Life	Min. 250 Reterminations
Contact Material	Alloy C2680-H
Contact Thickness	0.8mm
IDC Contact Plating	Tin Plating over Nickel
IDC Housing	PC, UL 94V-0
Compatibility	22-26AWG Solid Wire

Jack Connector

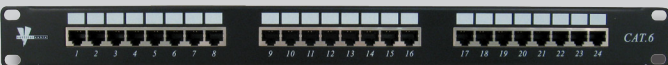
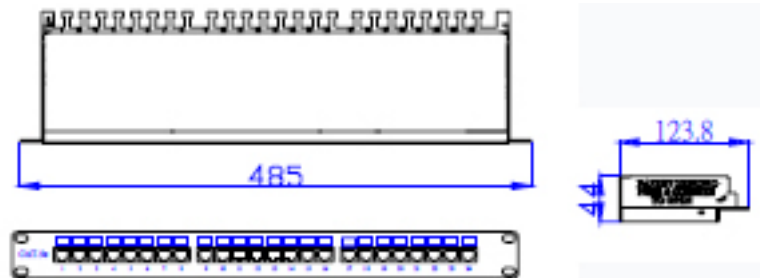
Operating Life	Min. 750 Insertions
Contact Material	Phosphor Bronze
Contact Plating	50 μ Gold Plated over Nickel
Jack Housing	Glass Filled Polyester UL94V-0

Printed Circuit Board

Material	FR4
Thickness	1.6mm

Operating Temp. 0° - 80° C

Accessories: Ground Wire and Cable Ties



Jack2Rack

Tel: 951 696-5481

Tel: 951 696-5478

Email: sales@jack2rack.com



www.jack2rack.com

Rev. 06/2011